

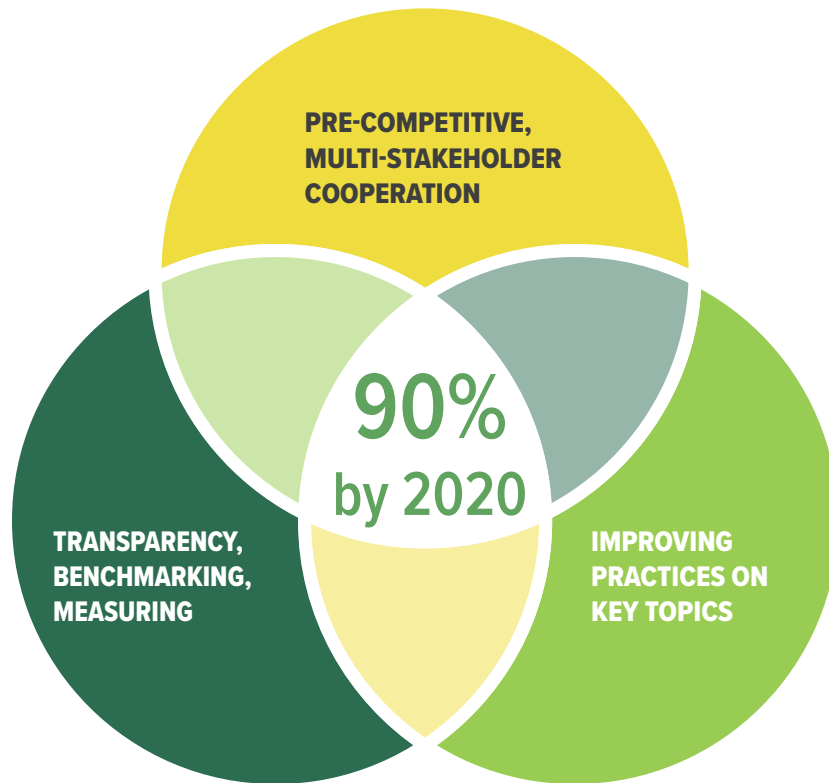


FLORICULTURE SUSTAINABILITY INITIATIVE

FSI AMBITION: **90%** SUSTAINABLE FLOWERS AND PLANTS BY 2020

WHAT IS FSI ?

HOW DOES IT WORK ?



Floriculture Sustainability Initiative (FSI) unites sector front-runners in the supply Chain. Growers, Traders, Retailers, Standards, Civil Society organisations and Governments join forces to accelerate sustainable volumes and create impact on key topics.

BENCHMARKING STANDARDS

Floriculture standards are benchmarked against international references and legislation. The FSI Basket of Standards reflects those Standards and Schemes that have successfully passed the benchmark.

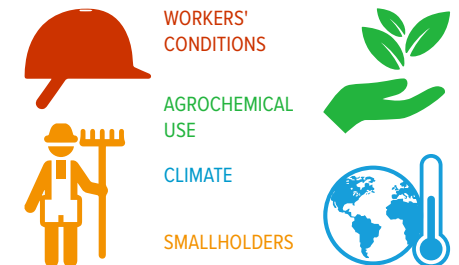


MEASURING VOLUMES

The percentage of sustainable produced and traded flowers and plants by FSI members is measured and monitored by an independent third-party. Annual progress towards the 90% target is communicated.

IMPROVE PRACTICES

The network of FSI members engage in field projects to tackle issues and create shared solutions that lead to scalable impacts on sustainability topics.





FLORICULTURE SUSTAINABILITY INITIATIVE

MEMBERS

+30 INTERNATIONAL MEMBERS

WHY PARTICIPATE ?

WHO IS INVOLVED ?

<p>CREATE IMPACT CREATE IMPACT TOGETHER IN A MULTI-STAKEHOLDER ENVIRONMENT</p>	<p>IMPROVE STIMULATE MARKET GROWTH OF SUSTAINABLE FLOWERS & PLANTS</p>
<p>NETWORK BE PART OF THE FRONT-RUNNER NETWORK ON SUSTAINABILITY</p>	<p>MITIGATE RISKS MITIGATE REPUTATIONAL RISK ISSUES</p>
<p>LEARN & SHARE SHARE BEST PRACTICES AND LEARNINGS ACROSS THE SUPPLY CHAIN</p>	<p>FUNDING HAVE ACCESS TO CO-FUNDING FOR YOUR SUSTAINABLE INVESTMENTS</p>

SUPPORTING THE UN SDGs

The work of FSI is directly related to 9 of the UN Sustainable Development Goals



- 1. No poverty
- 3. Good health and well-being
- 5. Gender equality
- 6. Clean water
- 8. Decent work & economic growth
- 12. Responsible consumption & production
- 13. Climate action
- 15. Protected Planet
- 17. Create Mechanisms & Partnerships





FLORICULTURE SUSTAINABILITY INITIATIVE

PROJECTS

14 FSI
PROJECTS
CONTRACTED SINCE 2014

NEARLY **€2 Million**
INVESTMENT
OVER 2017-2018

FSI PROJECTS 2017-2018

AGROCHEMICAL USE



Improving working conditions at farm level is a key aspect to enhance the sustainability of supply chains. this may include issues such as decent wages, nutrition, gender equality, housing, health & safety, and sanitation.

WORKERS' CONDITIONS



The lack of responsible agricultural practices poses potential reputational risks in the supply chain of non-safe or contaminated floricultural products. Residues and the wrong application of agrochemicals on farm causes severe health and safety issues.

CLIMATE



Responsible use of natural resources and the reduction of CO₂ emissions within the supply chain are areas in which the Industry can make improvements. This includes Energy use, Water, Transport and waste among others.

SUPPLY CHAIN



The lack of transparency and traceability in the supply chain can prevent improvements regarding social conditions (health, safety, working hours etc.), as well as on environmental issues such as use of chemicals, substrates, water etc.



**Transition towards
Integrated Pest
Management practices**



**Women Empowerment
Health & Safety of
Workers**



**Water Stewardship
Wetlands development
& Capacity Building**



**Knowledge on Pesticide
use
Transparency on
residues
Solutions to improve**



FLORICULTURE SUSTAINABILITY INITIATIVE

BASKET OF STANDARDS

10

STANDARDS IN
THE BASKET

PROCESS

BENEFITS IN THE SUPPLY CHAIN



1. QUICK-SCAN

Standards are published and available in the ITC standardsMap

2. BENCHMARKING

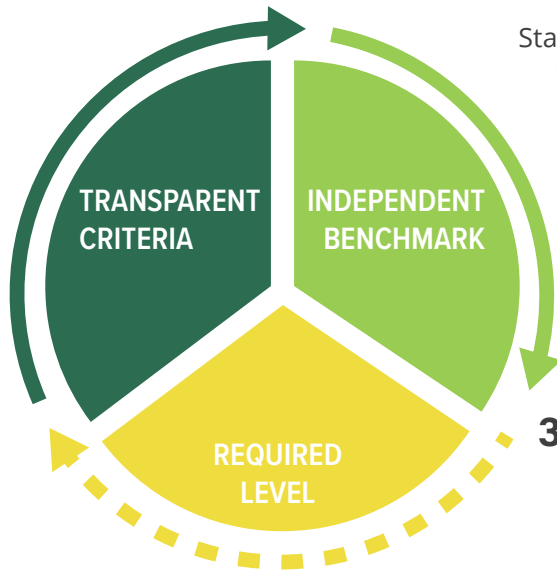
Standards are benchmarked against GSCP on Social criteria and Global GAP Benchmark on Environmental criteria



SOCIAL
CRITERIA



ENVIRONMENTAL
CRITERIA



3. BASKET OF STANDARDS

Standards reaching the required levels for Social (GSCP-B level or higher) and Environmental (Global GAP equivalent or higher) are considered "responsible sources" in the FSI Basket of Standards.



Growers

- > RECOGNITION AS RESPONSIBLE SOURCE
- > IMPROVE COMMUNICATION
- > AVOID DUPLICATION OF CERTIFICATION COSTS



Standards

- > DIFFERENTIATION FROM OTHER SCHEMES
- > TRANSPARENCY OF CRITERIA, AUDIT METHODOLOGY & PROCESS



Traders

- > MATCH MARKET DEMAND
- > IMPROVE SOURCING STRATEGY
- > IMPROVE COMMUNICATION TO CLIENTS



Retailers

- > COMPARE TO OWN REQUIREMENTS
- > MARKETING & COMMUNICATION
- > DIRECT SOURCING OPPORTUNITIES



CSOs

- > COMPARABILITY OF STANDARDS & SCHEMES
- > DRIVE IMPROVEMENT ON SUSTAINABILITY CRITERIA
- > STIMULATE BETTER PRACTICES

"THE FSI BASKET OF STANDARDS IS AN INTERNATIONAL REFERENCE POINT FOR RESPONSIBLE SOURCING"

CHALLENGES

SOLUTIONS

**IMPLEMENT THE O.E.C.D. GUIDELINES
& THE U.N. GUIDING PRINCIPLES**



- State duty to PROTECT.
- Corporate Social Responsibility to RESPECT.
- Access to REMEDY.

**MEET CONSUMER EXPECTATIONS
& MARKET REQUIREMENTS**



- Increased pressure from consumers
- Stricter conditions to access the market.
- Necessity for more transparency in the supply chain.

**ENHANCE SUPPLY CHAIN COOPERATION
& SCALABLE IMPACTS**



- Sustainability improvement requires multi-stakeholder engagement.
- Stimulate learning & sharing of results.
- Avoid duplication of initiatives, projects & funding.

