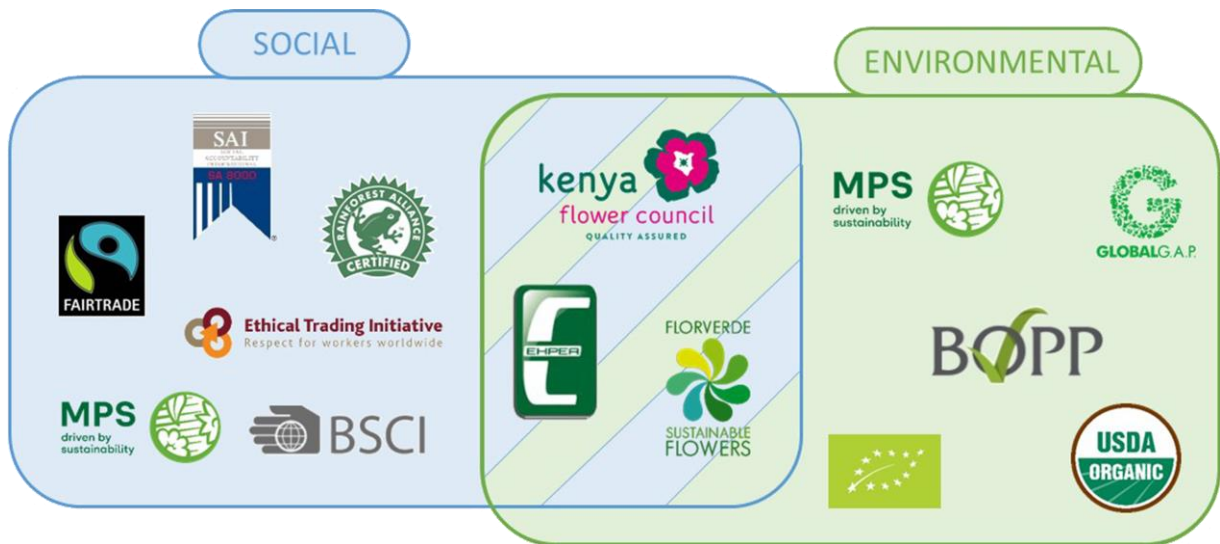




FLORICULTURE SUSTAINABILITY INITIATIVE

FSI Basket of Standards



SOCIAL		ENVIRONMENTAL & SOCIAL		ENVIRONMENTAL	
	MPS Socially Qualified (SQ) Certification Scheme		Kenya Flower Council Silver Standard		MPS-GAP Certification Scheme
	Business Social Compliance Initiative (BSCI) Code of Conduct		EHPEA Code of Practice for Sustainable Flower Production Silver level		BOPP (British Ornamental Plants Producers) Grower Standard
	Fair Trade International Hired Labour Standard		Florverde® Sustainable Flowers Standard		Global G.A.P. Floriculture Standard
	Ethical Trading Initiative Base Code / SMETA				EU Organic Farming
	Social Accountability International SA8000 Standard				USDA National Organic Program
	Sustainable Agriculture Network - Rainforest Alliance Certificate				



- FSI BASKET OF STANDARDS -

The FSI Basket of Standards is an instrument developed by the Floriculture Sustainability Initiative (FSI) to mainstream and promote responsible sourcing of flowers & plants in the areas of environmental and social practices.

The FSI Basket enhances transparency on standards criteria, identifies responsible sources through independent benchmarking, avoiding duplication of costs and audit fatigue in the supply chain.

The FSI Basket is open to standards that:

- Make their criteria publicly available on the ITC Standards Map (www.standardsmap.org/fsi)
- Are successfully benchmarked against international basic requirements for environmental and social practices.

The FSI members use the Basket to identify the products responsibly produced and to measure the progress towards the goal of 90% responsible flowers and plants by 2020.

HOW DOES IT WORK?

1. All standards in the FSI basket have made their criteria publicly available on the ITC Standards Map (www.standardsmap.org/fsi).
2. To ensure that the scope, audit methodology and audit process of each standard is in line with international basic requirements, the standards are independently benchmarked and in order to be part of the FSI Basket of Standards, must comply with the required levels of social and/or environmental practices as described below.
 - a. The environmental benchmarking is carried out by GLOBALG.A.P., the internationally recognized standard for farm production. It assures that safe and sustainable practices (Good Agricultural Practices) are implemented, and offers benchmarking services to other standards. On Environmental criteria, the required level is set as being equivalent or higher as the GLOBALG.A.P. criteria for flowers & ornamentals.
 - b. The social benchmarking is carried out by the Global Social Compliance Program (GSCP), the independent and authoritative reference point and benchmarking body for social auditing practices. Based on international labour standards and national legislation, the GSCP reference tools are applicable globally and across sectors. On Social criteria, GSCP B level is the reference.
3. If a standard complies, it's put in the basket

[Click here for more information on Environmental benchmarking](#)

[Click here for more information on Social benchmarking](#)



FLORICULTURE SUSTAINABILITY INITIATIVE

SOCIAL BENCHMARKING

1. Standards conduct a self-assessment for social compliance against international best practices as set out by the GSCP Equivalence Process.
2. GSCP experts conduct an in-depth review of the standards' policy and audit processes for social compliance against GSCP Reference Tool.
3. Outcomes of the benchmarking will indicate the level reached by standard/scheme.

The GSCP reference code relies on international conventions and guidelines, from which it gathered a set of generic requirements. These requirements are collected into 7 thematic chapters:

1. *Forced, bonded, indentured and prison labour*
2. *Child labour*
3. *Freedom of association and the effective recognition of the right to collective bargaining*
4. *Discrimination, harassment and abuse*
5. *Health and safety*
6. *Wages, benefits and terms of employment*
7. *Working hours*

ENVIRONMENTAL BENCHMARKING

1. Standards conduct a self-assessment for environmental compliance against GLOBALG.A.P. General Regulations and Control points and Compliance criteria.
2. GLOBALG.A.P. independent experts review the standards' integrity on environment criteria against the GLOBALG.A.P. normative documents.
3. Outcomes of the benchmarking will indicate if the standard/scheme reaches the GLOBALG.A.P. criteria which is the required level of equivalence.

The GLOBALG.A.P. Control Points and Compliance Criteria for flowers and ornamentals are separated into different modules, each one covering different areas or levels of activity on a flowers & ornamentals production site:

1. *Farm based*
 - *Farm site management*
 - *Farming practises record keeping*
 - *Workers health, Safety and Welfare*
 - *Hygiene*
 - *Competence and licenses*
 - *Use and cleaning of protected clothing*
 - *Management responsibility*
 - *Waste and pollution Management, recycling and re-use*
2. *Crop Based*
 - *Traceability*
 - *Fertilizer application*
 - *Water management*
 - *Plant protection products*
 - *Integrated pest management*



HOW TO USE IT?

The FSI Basket of Standards helps the supply chain to produce, trade and buy more responsibly produced flowers. Using the FSI Basket as a reference, traders and buyers can identify suppliers with responsible practices and products. When implementing the FSI Basket mechanism, the following guidelines apply:

- As a producer, I need to comply with at least one of the environmental standards/schemes in the FSI Basket to be considered as a responsible source, and
- If I am a producer located in a risk country, I also need to comply with one of the social standards/schemes in the basket (or one that covers both social and environmental) to be considered as a responsible source*.
- As a trader, my responsible sourcing outcome will depend on the volume from suppliers that are certified/audited by at least one of the standards/schemes in the FSI Basket, covering both social and environmental if sourced from a risk country.
- As a buyer/retailer, I will have transparency on whether my suppliers' certifications and audits comply or not with my procurement standards. All I have to do is to align with the basket and ask my supplier to source flowers and plants from producers that are audited or certified by the standards in the FSI Basket.

FSI uses the Basket to identify the products responsibly produced and to measure the progress of its members towards the goal of 90% responsible flowers and plants by 2020.

Information concerning purchased products, volumes and suppliers are cross-checked with the certifications/schemes in the FSI Basket of Standards to determine the volume and percentage of responsible products.

BENEFIT OF USING THE FSI BASKET

By using the FSI Basket in your supply chain, you will stimulate the increase of volumes of responsible products and support your sustainability targets.

Evaluating your sourcing performance will benefit your business and increase transparency in the supply chain. Outcomes will help you manage your risks and identify areas for improvements.

As a user of the FSI Basket you will be part of a strong network driving improvements on key sustainability criteria and position yourself as a frontrunner in the market.

WHO CAN USE IT?

The FSI Basket can be used by all stakeholders in the supply chain. It can also serve as an international sourcing reference for any private or public stakeholder with links to the floriculture sector.

* According to [BSCI countries' Risk Classification](#)



- SHARING THE BASKET -

HOW TO COMMUNICATE ABOUT IT?

As individual company and FSI member you are invited to reach out to producers, buyers and retailers to align with the FSI Basket. and to highlight it in your own communication strategy.

- When you meet with clients, take the opportunity to mention that you are using the FSI Basket as a reference in your sustainable sourcing strategy. You can use the picture of the basket included in this toolkit (and downloadable here) to include visuals in your presentations and show which standards/schemes are in the FSI Basket.
- When you discuss a specific sustainability topic such as water management or health & safety of workers, don't hesitate to go to the Standards Map portal to check in more details the criteria covered by the standards in the FSI Basket, and how they are covered.
- When you communicate about your sustainability performance and what you do to improve, you can refer to the FSI Basket and explain how it supports improvements towards higher sustainability levels. It can be displayed in the sustainability section of your website, published in your sustainability report and mentioned in your articles and interviews about environmental and social responsibility.

WHERE CAN I FIND IT AS A REFERENCE?

The FSI basket is available on the ITC Standards Map website, where you can also find more information on various standards/schemes.

A special page is dedicated to the FSI Basket on the FSI website, where the process and benefits are explained in more details. You will also find it referenced on the IDH website, and hopefully on your websites as well!



www.fsi2020.com

Rue de Trèves 49-51 Box 14
B-1040 Brussels

T : +32 231 06 38
jeroen@fsi2020.com
caroline@fsi2020.com